



REGCOPA

RegCOPA Help

© 2006 - 2008 Intervations, Inc.

RegCOPA Manual

RegCOPA Registry Editor

by Intervations, Inc.

RegCOPA Help

© 2006 - 2008 Intervations, Inc.

All rights reserved. No parts of this work may be reproduced in any form or by any means - graphic, electronic, or mechanical, including photocopying, recording, taping, or information storage and retrieval systems - without the written permission of the publisher.

Products that are referred to in this document may be either trademarks and/or registered trademarks of the respective owners. The publisher and the author make no claim to these trademarks.

While every precaution has been taken in the preparation of this document, the publisher and the author assume no responsibility for errors or omissions, or for damages resulting from the use of information contained in this document or from the use of programs and source code that may accompany it. In no event shall the publisher and the author be liable for any loss of profit or any other commercial damage caused or alleged to have been caused directly or indirectly by this document.

Printed: July 2008 in (wherever you are located)

Publisher

InterVations, Inc.

Special thanks to:

Ashley Allerton, and all our beta testers

Table of Contents

Foreword	5
Part I Intervations	7
1 About InterVations.....	7
2 Technical Support.....	7
3 Registration.....	8
4 Credits	8
Part II RegCOPA Manual	10
1 Welcome	10
2 What's New in V3.01.....	10
3 The Registry.....	11
4 Main Window.....	11
5 Main Toolbar.....	15
6 Multi-Display Area.....	18
7 Bookmarks.....	18
8 My Registry.....	18
9 Search Results.....	19
10 Compare Results.....	19
11 Startup Manager.....	19
12 Snapshots.....	20
13 Go To	21
14 Drag and Drop.....	21
15 Search and Replace.....	22
16 Defragment Registry.....	22
17 Backup and Restore.....	22
18 Update	22
Index	24

Part



1 Intervations

Please select a topic under this heading.

1.1 About InterVations

General E-mail: office@intervations.com

InterVations can be contacted either in the United Kingdom, or the United States of America. For support on the RegCOPA FTP Server please email support@regcopa.com. Although we offer telephone support our most knowledgeable support staff are not always available by telephone and you are likely to receive a more accurate solution to your problem through email.

InterVations, Inc.

PO Box 1017
Sandwich, MA, 02563
USA

Phone: +1 508 833 1660

InterVations Ltd.

66 Warren Road
Torquay, Devon. TQ2 5TL
United Kingdom

Phone: +44 (0)1803 213450

1.2 Technical Support

If you cannot find the solution to your problem in this help file, please see the FAQ pages on our web site ([internet link](#))

If this still does not provide a solution, please make contact, as appropriate, with our office:

email: support@regcopa.com

We guarantee a response to email support within 2 business days, however our response times are usually **much** quicker than this.

Phone: +1 508-833-1660 (11AM to 4PM EST/EDT)

Although we offer Telephone support for the RegCOPA we would prefer to deal with initial problems by email. Our most experienced support personnel are not located in

the office. You are likely to get a better answer to your problem by emailing us.

When requesting support please quote the version and date information in the About window.

Also, please give as much information as possible about how the problem arose (just what were you doing at the time?) and details of any error messages displayed.

1.3 Registration

When you install RegCOPA it will automatically start as a 30-day evaluation version - no registration is required.

The Registration Button gives access to the process of registration - **NOTE** that this is tied to the name of the person in whose name RegCOPA is installed.

1.4 Credits

Many thanks to our beta testing team for their diligence in uncovering bugs, and valuable suggestions in the course of the development of RegCOPA.

Particular thanks are due to:

Arthur Brough

Steve Garman

Martin Lancaster

Ashley Allerton

We are always looking for new beta testers for our products. To qualify as a beta tester you must have purchased at least one InterVations product. If you are interested in beta testing for us please contact support@intervations.com

Part



2 RegCOPA Manual

Please select a topic under this heading

2.1 Welcome

This Help File (V 3.01) was compiled on 09 July 2008

RegCOPA is a sophisticated editor for the Windows Registry that is compatible with Microsoft Windows 98, ME, 2000, XP, Server 2003 & 2008 and Vista

Modifications to the Registry can cause major changes to the way your computer works: if incorrect they may prevent the computer from booting, and in extremis may require a disk reformat and reinstallation of everything from scratch. We can accept no responsibility for the way this product is used. Be sure that you know what you are modifying BEFORE doing it.

This help file contains information about every area of RegCOPA:

1. Press F1 at any time for context-sensitive help.
2. Select a page from the Table of Contents, to the left.
3. Search for a word or phrase from the search tab to the left.
4. Click on a **Hot Spot** on an image in the help file for popup help on a control

Menu Options are shown like this: **File ⇒ Connect**

Go to the Credits page.

2.2 What's New in V3.01

Ability to perform multiple searches simultaneously. Each search will get it's own results tab, allowing multiple search results to be referenced easily.

Registry items can now be deleted directly from the search results screen.

Search result can be multiply selected in order to delete multiple items.

Added ability to re-run a search with the same parameters as the original search.

Added items to keys context menu to jump to same entry in HKEY_CURRENT_USER or HKEY_LOCAL_MACHINE.

Added ability to drag values to new key. Copy supported with CTRL key held.

Major update to startup manager. Items now separated with tree access.

Ability to open file properties from startup manager

Ability to lookup startup process in the online ProcessLibrary.com

Ability to add new startup processes

Ability to move/copy keys with drag drop. Shift key must be pressed to move a key for safety.

Added Registry Defragment Tool.

Added registry backup and restore tool.

Added ability to open, read and reset protection on protected keys. Protected keys will display in gray.

2.3 The Registry

What follows is a very brief overview of the Registry and its functions.

More details can be found (at the time of writing, October 2007) at:

<http://support.microsoft.com/kb/256986/EN-US/>

An internet search will also reveal many other useful resources.

In the 'good old days', hardware and software installed on a machine would mostly have its own Initialisation Files (eg config.ini), text-format files containing various information relating to its owner, configuration etc. Unfortunately, these became scattered across the directory structure, each with its own schema. There were also limits on the size of these files.

These factors, together with a massive increase in the amount of information needing to be stored and accessed quickly led to the development of the registry as a centralised, standardised repository of information related to the computer's hardware and software.

Keys can be exported to a .REG file, and later imported into the registry on the same computer, or on another.

RegCOPA allows the opening, editing and re-saving of these registry files, but NOTE that there are two formats which are quite different:

- Version 4 for Windows 95, 98, ME and NT
- Version 5 for Windows 2000 onwards (XP, Server 2003, Vista)

2.4 Main Window

This will be mostly self-explanatory to experienced computer maintainers. If this is all new to you, **be very cautious** that you do not make dangerous changes to your Registry - see the Welcome Page.

On this page

Views

The Root
Keys

Keys

Key Values

Context
Menus

Importing,
Exporting
and
Editing .REG
Files

Views

A more sophisticated systems of Views was introduced with Version 2 of RegCOPA.

A Windows option is available From the **Views** menu, to display or hide the panes individually, and the **Keys** and **Values** panes have small icons at their top right:



Values pane only. **Maximise** this pane. It will then occupy the space previously used by the Multi-Display Area, and if the Keys pane is closed or hidden, that area too.



Values pane only. **Normalise** - return pane to its usual form from being maximised (above).



Hide this pane. It can be temporarily shown again from the **Views** ⇒ **Windows** menu, or by clicking on the orange label that will appear. Moving the mouse outside the pane leads to its being hidden again.

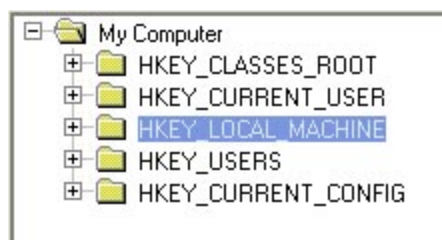


Unhide this pane - it will return to its usual permanently-displayed state.



Close this pane completely. It can be restored from the **Views** ⇒ **Windows** menu.

The Root Keys



These are the five major 'containers' for the data, divided into functional units. The files containing them are not directly user-accessible, except through a suitable Registry Editor like RegCOPA.

Each contains a hierarchy of keys and sub-keys, which can be opened by either double-clicking or clicking on the little + to the left. Right-clicking displays a context menu.

HKEY_CLASSES_ROOT

Contains information about the file system such as file associations (which software should be used to handle with file types).

HKEY_CURRENT_USER

Contains information related to the current logged-in user, mostly copied from other parts of the registry: this is a dynamic area and changes to it will usually be changed again by user actions, or the logging out of the user.

HKEY_LOCAL_MACHINE

The basic information about hardware and software on the machine. Values from here may be copied to other parts of the registry for actual use.

HKEY_USERS

Information about the users configured to use the machine, such as names and individual configuration settings for the machine.

HKEY_CURRENT_CONFIG

Information about the current configuration of the computer, which may have been obtained from other parts of the registry, or may be other temporarily held information.

Keys Pane

This shows the hierarchical structure of keys under each root key. This can be extremely complex with many similar keys, so **be very careful** you are working with the correct key!

The context menu (available with a right mouse-click) gives quick access to various functions:

Values Pane

When a key or sub-key is selected in the left-hand pane, the values stored in that key are displayed here. Each key may have any number of values under different names. For instance if you use MailCOPA email client, there is a key called Paths that holds values showing the paths to

- The Server (where the data is stored)
- The Screen (the file that contains graphic data for the display)
- The Root (the root directory for the program files).

Keys can store data in three fields in the registry, plus one stored only by RegCOPA:

Name - Just a name given to this entry

Type - the data format for the information

Data - the actual contents of this information

Comment - A text field used for noting, for instance, the meaning or use of this key. (eg "Fred put this here on 1st March just to see what happens" !). This information is not stored in the registry itself, but forms one of **RegCOPA's Registry Extensions**.

The Context menus

A right-click on the Keys or Values panes produces a context menu with options appropriate to that pane.

Keys Context Menu

New Key - Create a new key under this one

Delete - Delete this key

Rename - Rename this key

Add Bookmark - Add a bookmark to the RegCOPA Bookmarks tab

Copy Key Name - Copy the key name to the clipboard

Create Windows Shortcut - When run this shortcut will open RegCOPA at this key. A quick and easy way to access frequently used keys.

Export Key - Export this key as a .REG file, in which form it can be re-imported.

Go To HKEY_CURRENT_USER - Jumps to this key in HKEY_LOCAL_MACHINE, if it exists there.

Go To HKEY_LOCAL_MACHINE - Jumps to this key in HKEY_LOCAL_MACHINE, if it exists there.

Permissions

Windows NT introduced the concept of permissions for accessing registry keys, the idea being that Windows users (or software running under a username) may be limited in their ability to carry out various changes to the registry.

This is a complex area, and unless you have the necessary knowledge and experience, do not make changes in this area as you may cause irreparable damage to the registry, and/or could lose all ability to access the registry.

Key Values Context Menu

Obtained by right-clicking on a key value.

Modify - Modify the contents of this key value

New - Create a new key value. **Ensure you use the appropriate data type.**

Delete - Delete this key value.

Rename - Rename this key value

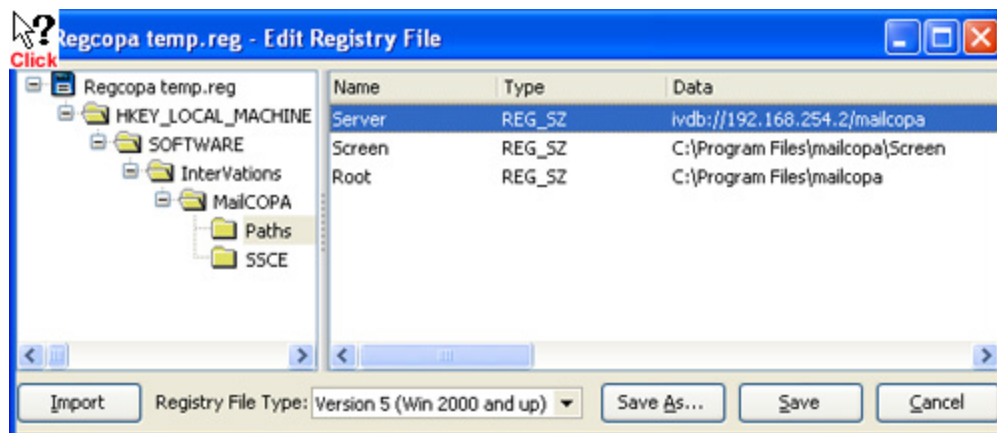
Create Windows Quickedit Shortcut - When run, this shortcut will open a small window enabling quick editing of this key value. Very useful if you frequently modify particular values by hand.

Importing, Exporting and Editing .REG Files

A key, together with its sub-keys may be exported as a .REG file using the option on the Keys Pane Context Menu (see above). You can save it anywhere you choose on your file system.

A key (either one previously exported or one obtained from elsewhere) may be imported from **File** ⇒ **Import**.

A .REG file may be opened for editing and re-saving from **File** ⇒ **Open**. Click a **Hot Spot** on the image below for more details:




2.5 Main Toolbar



This is displayed near the top of the Main Window. Note that the image above has been customised.

It is actually composed of two parts:

- The upper part, which forms the Main Toolbar
- The lower part, which is the GoTo bar - typing a registry address and pressing the  button takes you to that part of the registry. This section uses autocomplete to assist you.

These can each be shown or hidden from the toolbar context menu (right-click on a blank area of the toolbar).

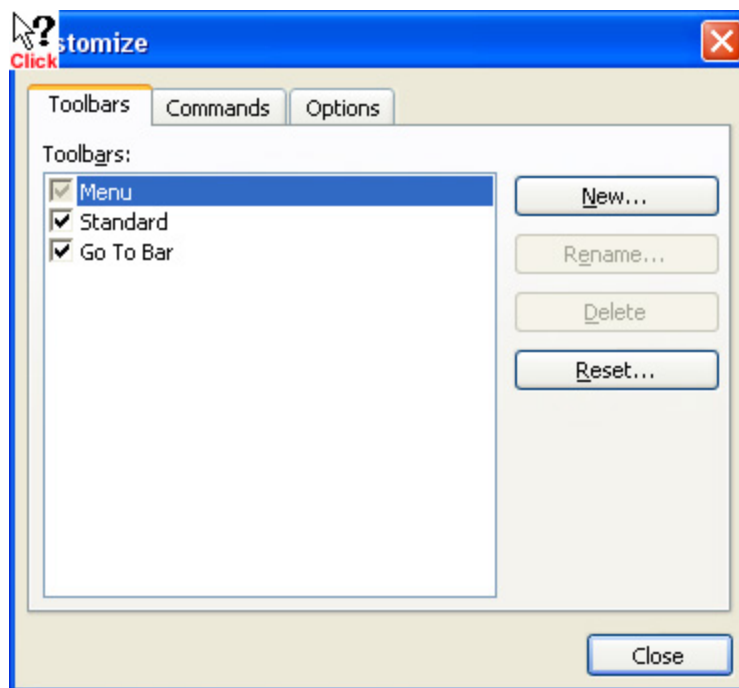
The size of the buttons can be changed from the Customise menu, as can many other aspects.

NOTE that the toolbar layout is stored in the User area of the registry, and will not be available to other **Windows Users** who will have their own layout.

Customising the Toolbar

You can achieve a high degree of customisation to suit your own way of working.

Right-click anywhere on the toolbar and select Customise, or select **Customise** from the **View** menu.

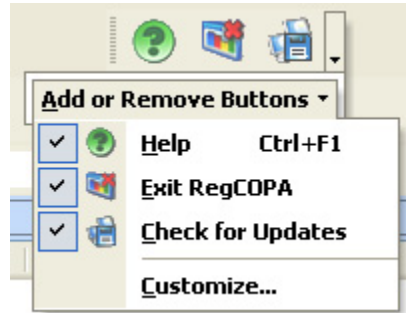


Custom Toolbars - it is possible to add your own toolbars, and add various buttons.

Once created, the toolbar will be free-floating, but may be dragged anywhere you want, including being added to the main toolbar by dragging and dropping.

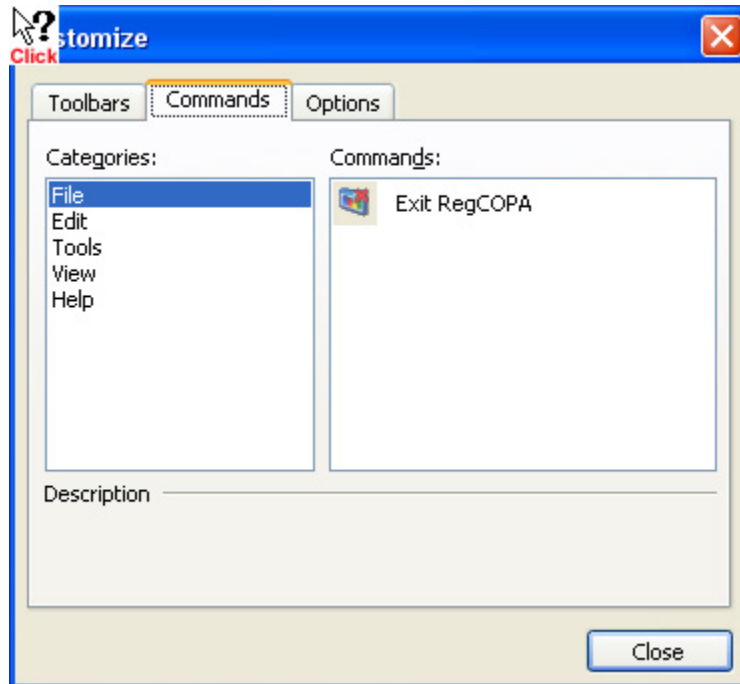
The context menu (right-click on a blank area of any toolbar) allows the temporary

addition or removal of buttons.

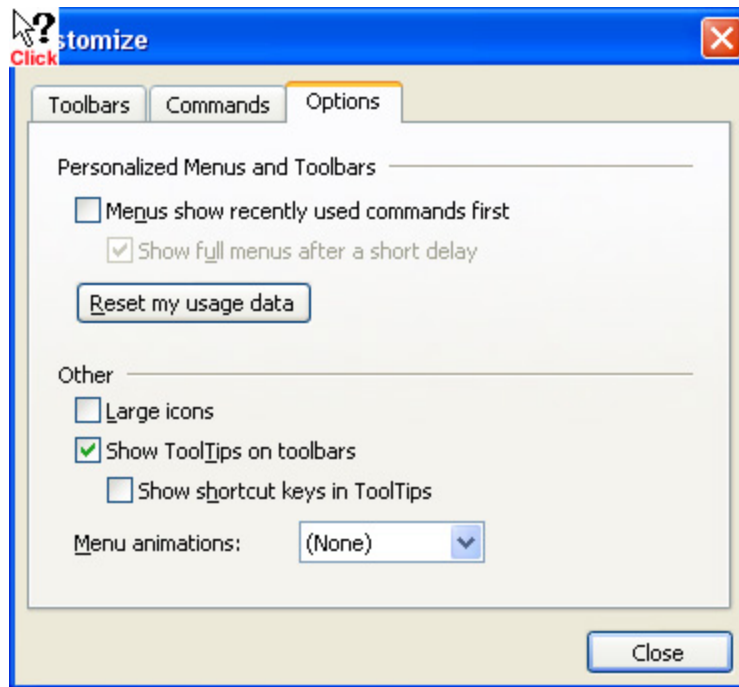


It is possible to add or remove buttons to/from the toolbar - **once the form below is open**, you can:

- Drag buttons off the toolbar
- Move buttons around within a toolbar
- Add commands from any of the menus onto the toolbar.



A number of options are available for the display of the toolbar, as shown below.



2.6 Multi-Display Area

This is the lower-right of the Main Window, and provides a quick access to RegCOPA's most used functions. Until appropriate operations have been carried out by RegCOPA, these areas may be blank.

See these pages for more information

[Bookmarks](#)

[My Registry](#)

[Search Results](#)

[Compare Results](#)

2.7 Bookmarks

This forms the first tab in the Multi-Display Area.

If a bookmark for a key is added from the context menu of a key in the List of Root Keys, a bookmark is added to this tab, enabling quick and easy access to this key.

Only the key is shown, not the full path - to display this, go to the My Registry tab.

Double-click a bookmark to activate it.

2.8 My Registry

This is the second tab of the Multi-Display Area.

Keys can be dragged and dropped into this area. The whole of the hierarchy will be shown, and clicking on part of this, the focus in the Keys and Values panes will move to

the corresponding place. This is very useful for frequently-accessed keys, you don't need to search in the hierarchy every time you want to access them.

Any bookmarks added to My Bookmarks will also be displayed here, but with the full path.

2.9 Search Results

The third tab of the Multi-Display area which displays the results of the searches previously conducted.

This now supports multiple searches, ie you can have multiple searches displayed (and even in progress) at the same time. A progress bar is displayed, and non-visible tabs will have the percentage-progress of the search displayed on the tab label.

Searches are available from the **Edit** menu, or by pressing the **Search** button on the toolbar.

Regular expressions are supported for **Search** and **Search and Replace**.

Items in the search results may be deleted (without the need to go to the relevant key), including multiple selections (using the usual SHIFT+Click or CTRL+Click). **Use this function very carefully**, as deletion of essential registry entries may render your machine unusable!

The context menu gives quick access to various functions:



2.10 Compare Results

This is the fourth tab of the Multi-Display Area.

Once a snapshot has been taken (accessed from **Tools** ⇒ **Create Registry Snapshot**) a comparison can be made between that snapshot and the current state of the registry (**Tools** ⇒ **Compare Registry with Snapshot**), and the differences will be displayed in this tab.

2.11 Startup Manager

Accessible from the **Tools** ⇒ **Startup Manager**.

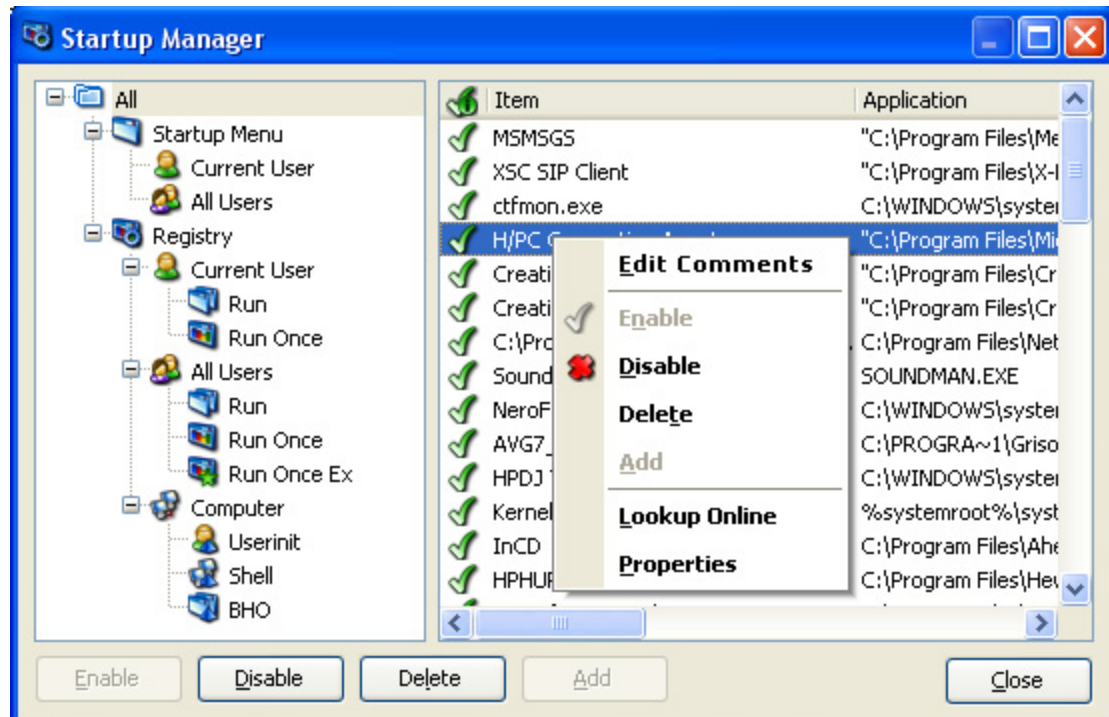
Programs can be run when Windows starts. This can be from the Startup folder of the Start Menu, either for the current user or for All Users, or from the registry.

This function allows you to identify those that are started from the registry and the

location of the entry. This is useful if debugging startup problems.

You can **amend** the comment, **disable** the item (in which case it will not feature at startup, but may be reinstated later), or **delete** the item completely. **WARNING! DELETED items can only be reinstated manually or by reinstalling the relevant software.**

Click a **hotspot** on the image below for further information



2.12 Snapshots

Accessed from the Snapshots button, or **Tools** ⇒ **Create Registry Snapshot**.

A record of the current state of the registry will be made - actually in the form of an InterVations database. Any existing snapshot will be overwritten, so it is only possible to have one snapshot in existence at any time.

The state of the registry at a later time can then be compared with the snapshot to show what changes have occurred.

NOTE - the registry is a dynamic, shared resource, whose contents may be changed at any time by software. So there may be changes during the taking of the snapshot over which we have no control. To reduce this problem, whilst taking snapshots (and compare results), have as little software running as possible.

2.13 Go To

Accessed from **Edit** ⇒ **Go To**.

Takes you immediately to the key specified. You **MUST** enter a complete key including path, which is most simply taken from the clipboard.

However, there is also an auto-complete facility which will offer possibilities as you type - if the current suggestion is correct, press the **End** key and continue typing. This can significantly speed up and simplify the use of Go To.

2.14 Drag and Drop

The following **Drag'n'Drop** operations are available:

- Values can simply be dragged to another key, and will be **moved** from the old to the new key.
- If a value is dragged to a new key, but once over that key, if the **CONTROL** key is pressed then the mouse button released, the value will be **copied**.
- A value can be dragged to the Desktop, where it will form a Quickedit Shortcut.
- Keys can be dragged to the Desktop (where they will form a Registry Key Shortcut), to your Bookmarks and to My Registry.

Quickedit Shortcut.

This will produce a popup containing the old value and the opportunity to edit it. Once OK is pressed, the value shown here will be substituted for the value in the corresponding key in RegCOPA

Registry Key Shortcut

This will open RegCOPA with the corresponding key selected. Note that if RegCOPA is already running, a new instance will be started, so as not to interfere with work you are doing in the existing instance of RegCOPA.

Shortcut Names

These will include the name of the key or value so that you can have any number you want on the desktop for different keys or values.

However, if you wish to maintain several versions of a value on the desktop, you will need to rename one or more of those there, otherwise a new version will overwrite the existing one.

For instance you may have some software that you wish to switch between different data paths, this path being held in a registry key.

Set this path to one value (eg c:\data\this is the main data directory\), drag this to the desktop and rename it something like "My App's Main Data".

Then set the path to another value (eg d:\data\this is the other data directory\), and drag this to the desktop. You can leave the name as it is, or change it to something like

"My App's Other Data".

You could create more of these if for instance you wish to access data (or an initialisation file for instance) in multiple locations.

Storing Shortcuts Elsewhere

Shortcuts don't need to be on the desktop - once created there, you can move them to other directories if you wish.

2.15 Search and Replace

It is possible to find a key value and replace it with something different, either in the whole registry, or from a particular branch down.

This is particularly useful if moving a program from one place to another. Tell RegCOPA to change all references to ***c:\myprog\oldplace*** to ***c:\myprog\newplace***

Regular expressions are supported for Search and Search and Replace.

2.16 Defragment Registry

Accessed from **Tools** ⇒ **Defragment**

In the course of use, many registry keys may be created and later deleted, but the space they occupied still remains, making the registry bigger than it need be and slowing searching.

This function will remove the dead space.

It **does not** delete redundant keys (which for instance relate to files or software that no longer exists on the computer).

2.17 Backup and Restore

Accessed from **Tools** ⇒ **Backup** or **Tools** ⇒ **Restore**

Allows the making of a backup copy of the registry hives (the actual files that make up the registry), in a place of your choosing. You can backup all of them or any selection from them if you wish.

This may be restored at any time using RegCOPA. This will overwrite the current hives **so use with caution!**

The registry will automatically be defragmented before being backed up.

2.18 Update

Accessible from the **Help** ⇒ **Check for Updates**.

This enables a quick check with our Update Server for any new version that might

become available.

Index

- A -

Applications 19

- B -

Backup 22
Bookmarks 18
Boot 19

- C -

Compare Results 18, 19
Contact 7
Copy 22
Cost 8
Credits 8
Customise 15

- D -

Defragment 22

- E -

Edit 11
Empty 22
Evaluation 8
Export 11

- F -

Free 22

- G -

Go to a Key 21

- H -

Hives 11

- I -

Icon Size 15
Intervations 7

- K -

Keys 11

- M -

Main Window 18
Menu Animation 15
My Registry 18

- O -

Open 11

- P -

Price 8

- R -

Recently used commands 15
Register 8
Registration 8
Replace 22
Restore 22

- S -

Search 19, 22
Search Results 18
Shortcut Keys 15
Shortcuts 21
Snapshot 20
Space 22
Startup 19
Support 7

- T -

Toolbars 15

Tooltips 15

- U -

Update 22

- V -

Values 11

Versions 11

Views 11

- W -

Welcome 10

